

## Instrumentation :

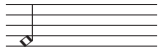
Soprano (Dramatico)  
 Alto Flute in G  
 Clarinet in B<sup>b</sup>  
 Violin  
 Viola  
 Violoncello  
 Piano

Duration : about 7 minutes

Text : Extract from "George Gray - Spoon River Anthology"  
 by Edgar Lee Masters (Translate: Fernanda Pivano)

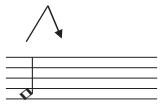
## Symbols :

### for Soprano :

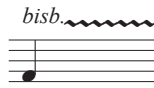


Pronunciation breathy

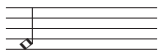
### for Woodwinds :



Jet whistle



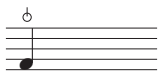
*Bisbigliando (=bisb.)*  
 alternate fingering in 2 same notes



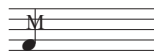
Aeolian sound, breathy



Whistle tone, freely



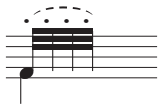
Slap tonguing



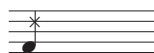
Multiphonic (*son fendu*)  
 include the written note, making distorted sound

### for Strings :

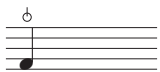
*s.p.* ... sul ponticello / *m.s.p.* ... molto sul ponticello  
*p.o.* ... position ordinary



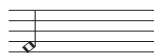
*Saltato (ricochet)*



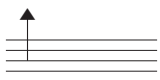
*Col legno battuto (= c.l.b.)*



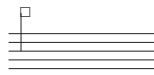
*Bartók pizz.*



Harmonics (Natural / Artificial)



Highest tone

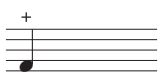


Play on the bridge  
 making fricative sound completely, like white noise



Bowing stop on the bridge  
 to damp. resonance suddenly

### for Piano :



Mute :  
 - between damper and bridge, distorted sound  
 - near the bridge, like luth stop  
 - tight, making tapping sound



Depress silently  
 cluster, black and white keys

# Barcarolle of Spoon River

Transposed Score

for soprano and 6 musicians (2019)

Text : Edgar Lee Masters

(Translate : Fernanda Pivano)

Music : Tetsuya Yamamoto

$\text{♩} = 54$

Soprano

Alto Flute in G

Clarinet in B $\flat$

Violin

Viola

Violoncello

Piano

A. Fl.

Cl.

Vn.

Va.

Vc.

Pf.

Let whistle

*sf*

*poco*

*mp-pp*

*bisb.*

*saltato col legno battuto*

*mp*  $\rightarrow$  *ppp*

$\emptyset < pp > \emptyset$

*arco*

*pp*  $\rightarrow$  *ff*

*p.o.*  $\rightarrow$  *s.p.*

*sfz*

*arco poco*

*mp-pp*

*ff*

*p*

*pp*

*ffz*

*bartók pizz.*  
Almost attack noise only

*gub* ----- |  
Mute, between damper and bridge  
distorted sound

*sf*

*bisb.*

*pp*

*poco*

*pp*

Highest tone  
*vib. poco*  $\rightarrow$  *molto*

*pp*  $\rightarrow$  *sf*

*p.o. III*

*sub pp*

*s.p. flautato*

*pp*  $\rightarrow$  *ppp*

*pp*

*p.o.*

*15ma* ----- |

*fffz*

*pp* +

*pp*

Mute, near the bridge

12

A. Fl. *ff* *mp-pp* *p*

Cl. *ff* *mp-pp* *ff pp*

Vn. *ff* *pp* *p* *pp*

Va. *ff* *pp* *poco*

Vc. *ff* *pp*

Pf. *ff* *fffz* *p*

*8va* *15ma*

*sub. pppp lontano*

15

A. Fl. *Aeolian sound* *sf* *mf* *pppp* *pp* *mf* *pp*

Cl. *mp-pp* *mp* *pp*

Vn. *pp* *mp-pp*

Va. *mp-p* *pp*

Vc. *pp* *mp-pp*

Pf. *mp*

*poco meno mosso* *rall. molto* -

harm.

A. Fl. *mf* *fff* *p* *ppp* *sf*

Cl. *mf* *fff* *p* *ppp* *bisb.* *dolce*

Vn. *mf* *fff* *p* *ppp* *sf*

Va. *mf* *fff* *p* *ppp* *sfz*

Vc. *mf* *fff* *pp* *ppp* *sfz*

Pf. *f* *mf* *p* *mp* *p* *mp* *pp*

*pppp* *lontano*  
damp./bridge  
*sub*-----

III *m.s.p.*  
IV

IV

24 *a tempo* *p*

Sop. L'a - mo - re mi si off - ri e io

Whistle tone, freely

A. Fl. *mp-pp* *pp* (play in "mf") *pp*

Cl. *mp* *ppp* *pp*

Vn. *pp* *pp* *poco* *poco*

Va. *pp* *sf* *pp*

Vc. *mp-pp*

Pf. *let vibrato* *pp*

(*sub*)-----

30 *mf* *mfpp* *mf* *6*

Sop. mi rit-ra - ssi dal suo in - gan - no;

A. Fl. *mp-pp*

Cl. *mfpp* *mf* *pp* *mf* *pp* *mf* *pp* *s.p.* *pp > ppp*

Vn. *mp* *pp*

Va. *mf* *mp-pp*

Vc. *mf* *pp* *mf* *pp > ppp*

Pf. *mf* *p* *mf* *pp* *pp*

*gva.* *3*

35 *p* *mf* *mp*

Sop. il do - lo - re bussò alla mi - a por - ta io e - bbi pau ra;

A. Fl. *mp-pp* *pp* *mp* *pp*

Cl. *mp-pp* *poco* *bisb.* *mp* *ppp* *mp-pp*

Vn. *pp* *mf > pp* *c.l.b.* *arco*

Va. *pp* *mp-pp* *saltato* *pp* *p.o.*

Vc. *pp*

Pf. *mp* *p* *pp*

Sop. *f* *mp* *mp*

l'am - bi - zio - ne mi chia - mò ma io te - me - tti gli im - pre - vis -

A. Fl. *f* *mp-pp* *p* *p*

Cl. *f* *mp > ppp* *mp-pp* *ppp dolce* *p* *mp-pp* *p*

Vn. *p* *IV* *IV* *p*

Va. *f* *p* *sf* *p*

Vc. *p* *sf*

Pf. *molto legato* *mp > p* *3* *sost.  $\text{♩}$*

Sop. *p* *p* *mf* *poco rall.*

- ti. Mal - ga - do tu - to a - ve - vo fa - me di un si - gni - fi - ca - to ne - lla

A. Fl. *pp* *mp-pp* *mp espressivo* *pp*

Cl. *pp* *pp > ppp* *mp espressivo* *pp*

Vn. *pp* *pp* *mp* *pp*

Va. *pp* *pp* *mf*

Vc. *pp* *saltato* *pp* *s.p.* *mp* *ppp*

Pf. *mp* *p dolce* *3* *mp* *p*